

## Concert-2 two channel direct box

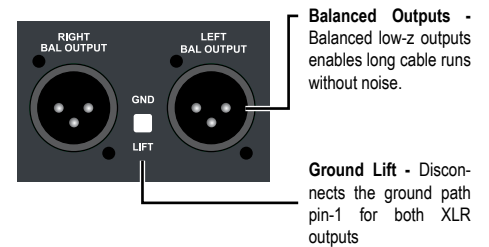
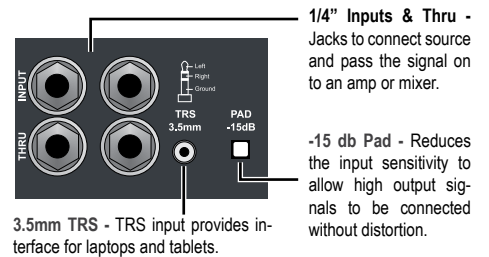
- **Converts unbalanced instrument signals to balanced mic level**
- **Eliminates hum and buzz caused by ground loops**
- **Ruler flat frequency response from 20 Hz to 20 kHz**
- **Plug and play easy to use, no power required**

The Iso-Max Concert-2 is a stereo direct box designed to drive unbalanced instrument signals distances to 100 meters (300') or more without high frequency loss or introducing noise into the signal path.

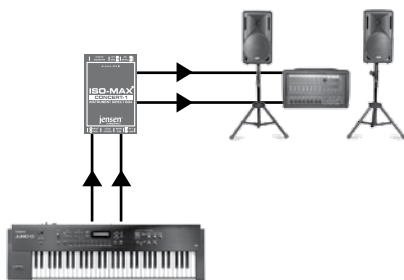
The design begins with a rugged extruded aluminum enclosure and steel slide-in inner tray with recessed zones at each end to protect the switches and connectors. At one end, left and right 1/4" instrument inputs and thru-puts are wired in parallel with a handy 3.5mm mini TRS for laptops and tablets. A -15dB pad decreases input sensitivity for greater signal handling when interfacing line level sources. At the other end, two XLR male outputs with ground lift makes for easy connection.

Inside, two high-performance Jensen JT-DB-EPC transformers provide galvanic isolation as they passively lower the impedance and perform the balancing. A high 140 kΩ input impedance reduces loading, enabling low-output instruments such as a vintage Fender® bass to be connected without losing tone. As hi-Z instruments are particularly sensitive to noise, internal Faraday shielding protects against interference from RF. An external MuMETAL® can further protect the sensitive internal workings to ensure a quiet interference-free performance even when surrounded by magnetic fields from amplifiers, power supplies and stage light dimmers.

With over +22 dB of signal handling capacity, the Concert-2 direct box gracefully handles extreme signals such as those produced by digital pianos while producing a warm Bessel response that is often referred to as 'vintage' sounding. These features combine to make the Concert-2 the ideal choice for studio or live use.

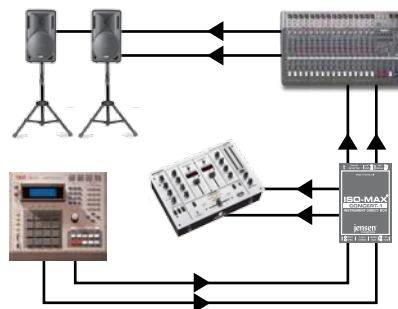


## Applications



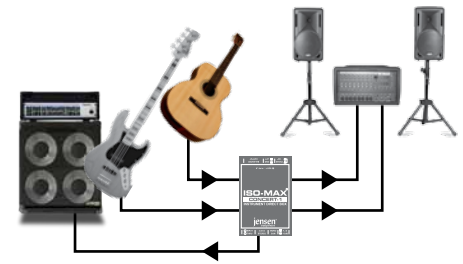
### Concert-2 with stereo keyboard

The Concert-2 is designed for stereo devices like keyboards. Simple, straight ahead hookup makes it easy to connect your keys to your recording system for great stereo sound!



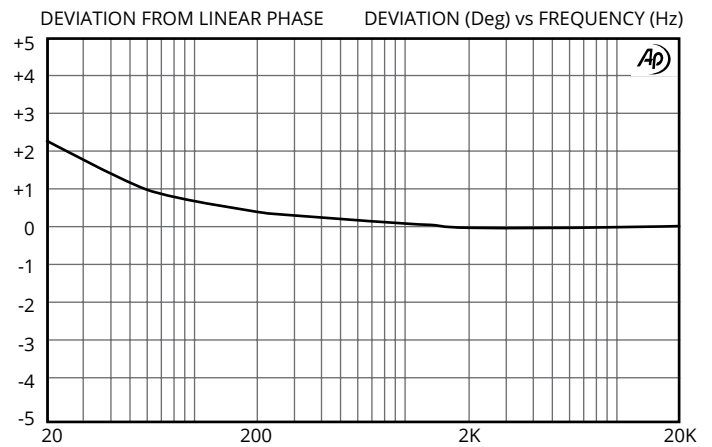
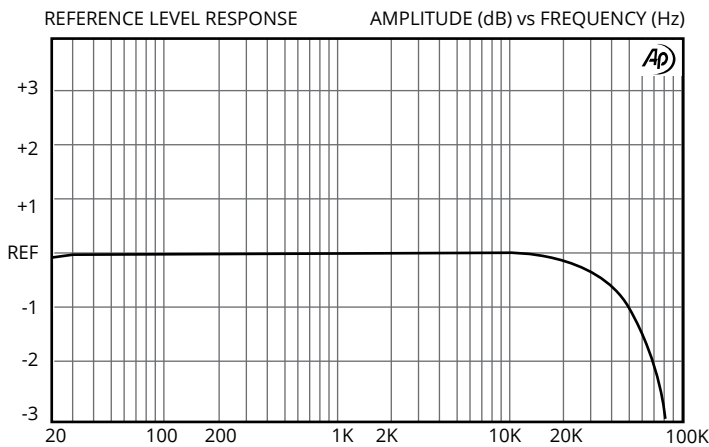
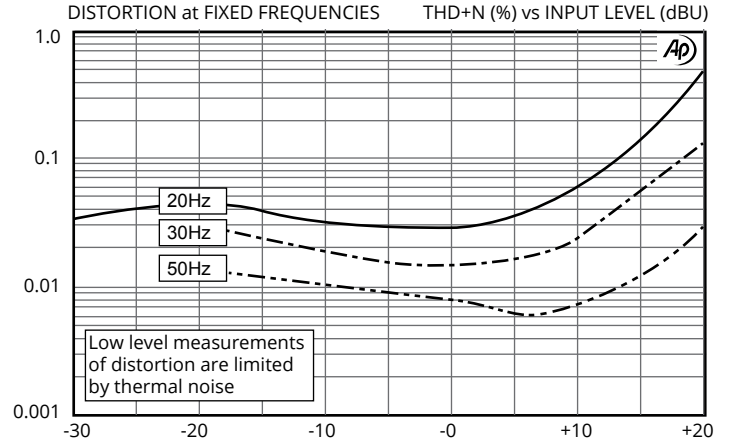
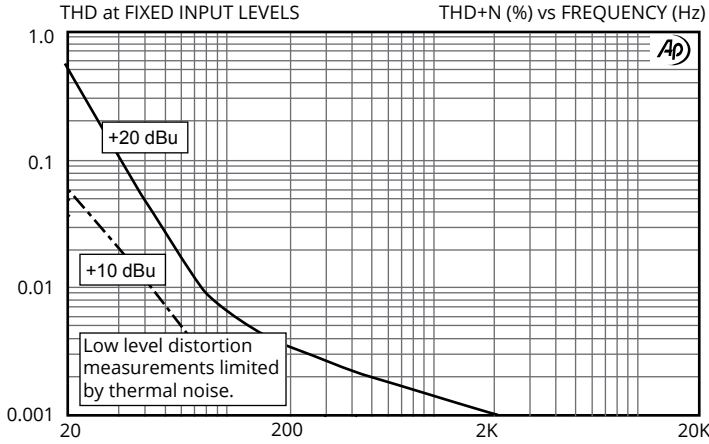
### Concert-2 with drums & samplers

Driving the output from a sampler or electronic drum machine to the PA system has never been easier. The Concert-2 delivers plenty of headroom and lets you connect a local DJ mixer too.



### Concert-2 with instruments

The smooth sounding Jensen transformers smooth out the peaks from your acoustic guitar to produce a nice rich, warm tone..

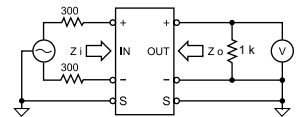


PARAMETER	CONDITIONS	MINIMUM	TYPICAL	MAXIMUM
Input impedance, Zi	1 kHz, 0 dBu, test circuit 1	48 kΩ	200 kΩ	
Voltage gain	1 kHz, 0 dBu, test circuit 1		-20 dB	-35 dB
Magnitude response, ref 1 kHz	20 Hz, +4 dBu, test circuit 1	-0.25 dB	-0.08 dB	0.0 dB
	20 kHz, +4 dBu, test circuit 1	-0.25 dB	-0.07 dB	+0.1 dB
Deviation from linear phase (DLP)	20 Hz to 20 kHz, +4 dBu, test circuit 1		+1.2/-0°	±2.0°
Distortion (THD)	1 kHz, +4 dBu, test circuit 1		<0.001%	
	20 Hz, +4 dBu, test circuit 1		0.036%	0.10%
Maximum 20 Hz input level	1% THD, test circuit 1	+19.5 dBu	+21.5 dBu	
Input common mode rejection ratio (CMRR) unbalanced source	60 Hz, test circuit 2		80 dB	
	3 kHz, test circuit 2	40 dB	45 dB	
Output impedance, Zo	1 kHz, test circuit 1	135 Ω	142 Ω	155 Ω
Optimal cable length	input*		3 m (10')	15 m (50')
	output		30 m (100')	150 m (500')
Temperature range	operation or storage	0°C		70°C

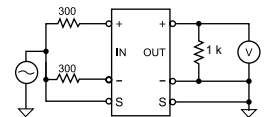
All levels are input unless noted

\*Passive instruments such as a Fender Jazz bass are subject to noise as their signal is not buffered by an active preamp. For these keeping the input cable shorter will result in less noise.

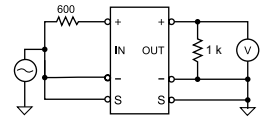
Test Circuit 1:



Test Circuit 2:



Test Circuit 3:



All minimum and maximum specifications are guaranteed. Unless noted otherwise, all specifications apply at 25°C. Specifications subject to change without notice. All information herein is believed to be accurate and reliable, however no responsibility is assumed for its use nor for any infringements of patents which may result from its use. No license is granted by implication or otherwise under any patent or patent rights of Jensen Transformers, Inc.

\*\* IMPORTANT NOTE: THIS PRODUCT IS NOT INTENDED FOR USE IN CIRCUMSTANCES WHERE THE DC OR PEAK AC VOLTAGE BETWEEN INPUT AND OUTPUT CONNECTIONS EXCEEDS 34 VOLTS OR WHERE ITS FAILURE COULD CAUSE INJURY OR DEATH.