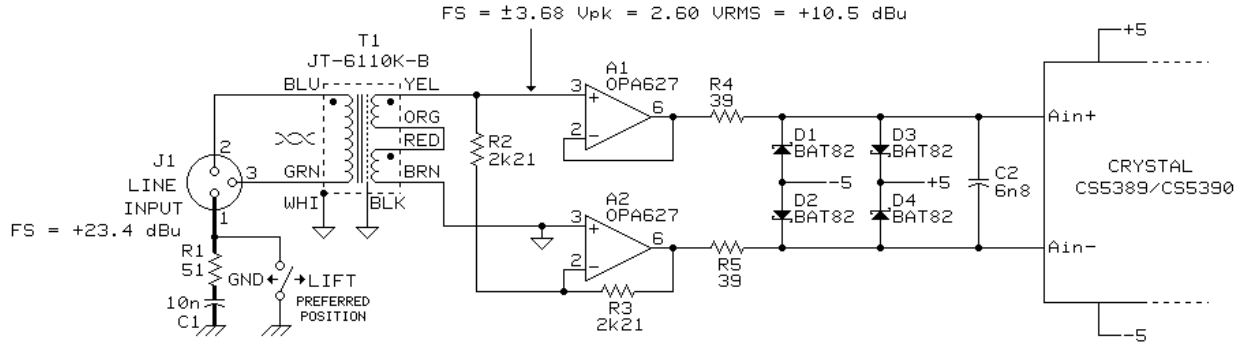


HIGH CMRR BALANCED INTERFACE FOR CRYSTAL 18 or 20 BIT A/D CONVERTERS



NOTES

1. INPUT DRIVING SOURCE SHOULD HAVE LOW OUTPUT IMPEDANCE (UNDER 600Ω PREFERRED). INPUT IMPEDANCE AT J1 IS 36 kΩ.
2. TIGHTLY TWIST LEADS AS SHOWN ∞ . KEEP ALL WIRING AS SHORT AS POSSIBLE.
3. ALL RESISTORS ARE $\pm 1\%$ 1/4W METAL FILM TYPES, ROEDERSTEIN MK2-1 OR EQUIVALENT. ALL RESISTORS IN OHMS, 2k21 = 2.21k
4. USE OF GOLD PLATED CONTACTS IN ALL CONNECTORS IS HIGHLY RECOMMENDED.
5. R1 AND C1 PROVIDE RF TERMINATION FOR THE CABLE SHIELD. FOR BEST CMRR PERFORMANCE, CONNECT THIS SHIELD DIRECTLY TO THE CHASSIS AT THE SOURCE END ONLY.

jensen

AS062

01/05/95

7135 HAYVENHURST AVE.
VAN NUYS, CALIFORNIA 91406
(818) 374-5857

© COPYRIGHT 1994, JENSEN TRANSFORMERS, INC.