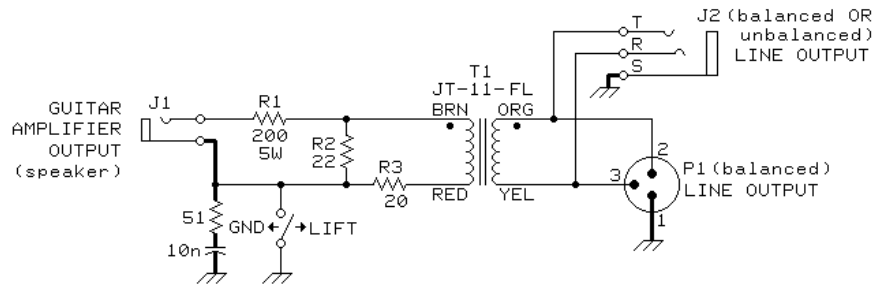


## JT-11-FL ISOLATES & CONVERTS GUITAR AMP SPEAKER OUT TO LINE OUTPUT



USE "LIFT" POSITION WHEN OUTPUT IS UNBALANCED,  
AND EITHER FOR BEST RESULTS WHEN OUTPUT IS BALANCED.

### NOTES

1. If no other load is connected to the amplifier and it is a vacuum tube type,  
CONNECT A SUITABLE LOAD RESISTOR ACROSS J1. This will prevent possible amplifier damage.
2. Do NOT use both output connectors at the same time.  
J2 can feed EITHER balanced (3-conductor patchcord) or unbalanced (2-conductor patchcord) inputs.  
Line output level: +4 dBu with 12.7 VRMS at speaker (20 Watts into 8  $\Omega$ )  
+11 dBu with 28.3 VRMS at speaker (100 Watts into 8  $\Omega$ )
3. Additional load seen by guitar amplifier = 220  $\Omega$  (will not affect amplifier)
4. Driving source impedance at line output = 100  $\Omega$
5. R1 is a 5 watt wirewound type, Memcor-Truohm type SC5E or equivalent  
R2 and R3 are 5% 1/4 watt general purpose carbon film types
6. Do not mount T1 near strong AC magnetic fields such as power transformers,  
CRT monitors, etc.

© COPYRIGHT 1995, JENSEN TRANSFORMERS, INC.

<b>jensen</b>	AS061
	05/30/95
7135 HAYVENHURST AVE. VAN NUYS, CALIFORNIA 91406 (818) 374-5857	