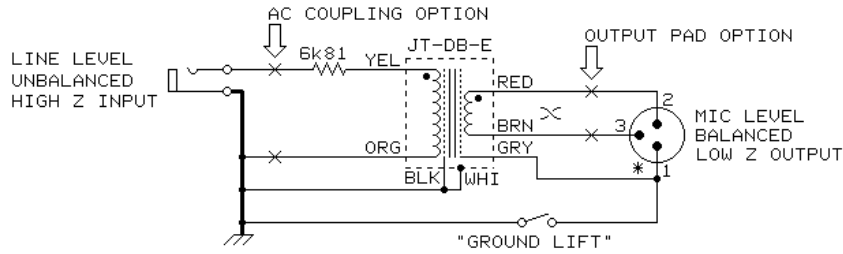
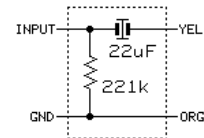


JT-DB-E STANDARD MUSICAL INSTRUMENT or SYNTHESIZER "DIRECT BOX"

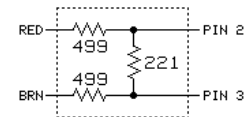


* THE HOUSING OF THE OUTPUT CONNECTOR SHOULD BE INSULATED FROM THE CHASSIS. IF MATING CONNECTORS TIE PIN 1 TO THE SHELL, THE GROUND LIFT SWITCH WILL HAVE NO EFFECT.

THE AC COUPLING OPTION SHOULD BE USED IF THE INPUT MAY BE FROM A POWERED DEVICE, WHICH MAY HAVE DC VOLTAGE ON ITS OUTPUT. THE CAPACITOR IS A 22 μ F 25V NON-POLAR TYPE, PANASONIC ECE-A1EN220S OR EQUIVALENT.



THE OUTPUT PAD SHOULD BE USED WHEN THE INPUT SIGNAL IS COMING FROM A HIGH OUTPUT ELECTRONIC INSTRUMENT OR WHEN THE OUTPUT IS GOING TO BE CONNECTED TO A CABLE THAT IS LONGER THAN 10 OR 15 FEET. THE PAD WILL ISOLATE THE TRANSFORMER OUTPUT FROM THE CAPACITIVE LOADING OF THE CABLE, PREVENTING A RISE IN RESPONSE AT HIGHER FREQUENCIES. THE OUTPUT LEVEL IS NORMALLY ABOUT 23 dB BELOW THE INPUT. THE PAD ADDS ANOTHER 15 dB OF ATTENUATION, MAKING THE TOTAL ATTENUATION ABOUT 37 dB.



© COPYRIGHT 1992, 1995 JENSEN TRANSFORMERS, INC.

jensen	AS007
	09/13/95
7135 HAYVENHURST AVE. VAN NUYS, CALIFORNIA 91406 (818) 374-5857	