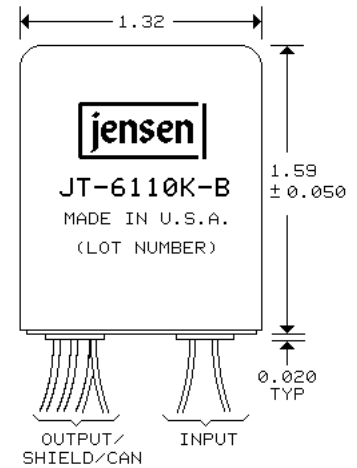


LINE INPUT TRANSFORMER

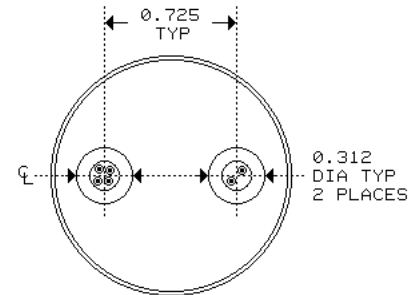
4:1 STEPDOWN FOR "BALANCED BRIDGING" INPUTS

- **Our highest level handling input transformer**
- **Wide bandwidth: -3 dB at 0.15 Hz and 120 kHz**
- **Recommended for levels up to +26 dBu at 20 Hz**
- **High input impedance: 37.5 k Ω**
- **High common-mode rejection: 130 dB at 60 Hz**

This transformer is designed for use in wideband line input stages. The secondary source impedance of only 87 Ω is an excellent match to ultra-low noise amplifiers. The primary is fully balanced and its leads may be reversed to invert polarity, if required. A 30 dB magnetic shield package is standard.

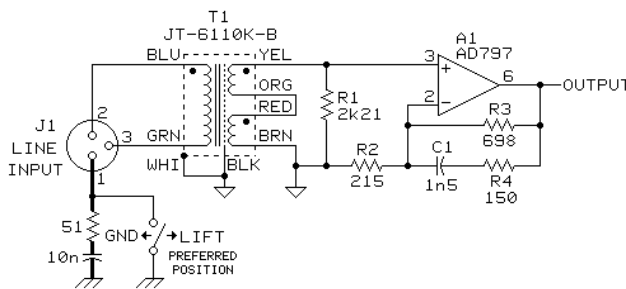


#30 AWG (7x38) UL STYLE 1061 COLOR CODED WIRE LEADS, 8" MINIMUM LENGTH



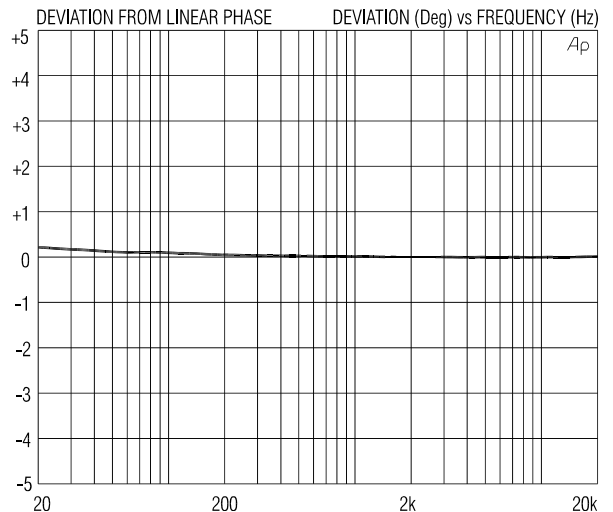
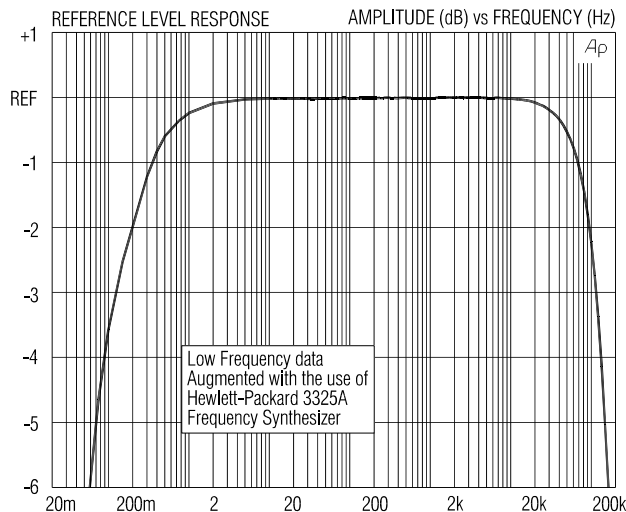
BOTTOM VIEW

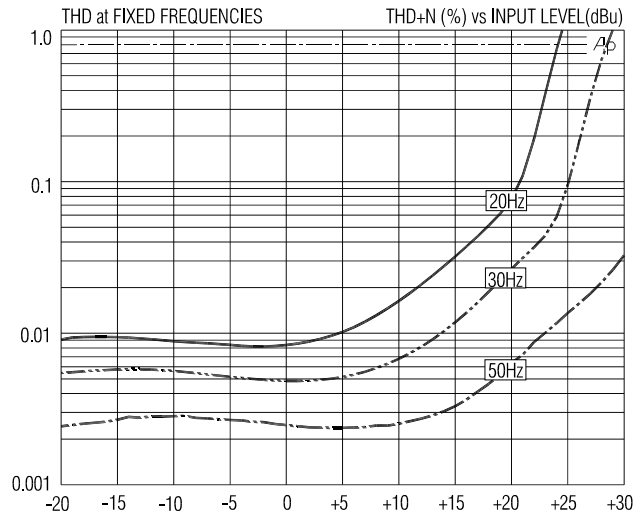
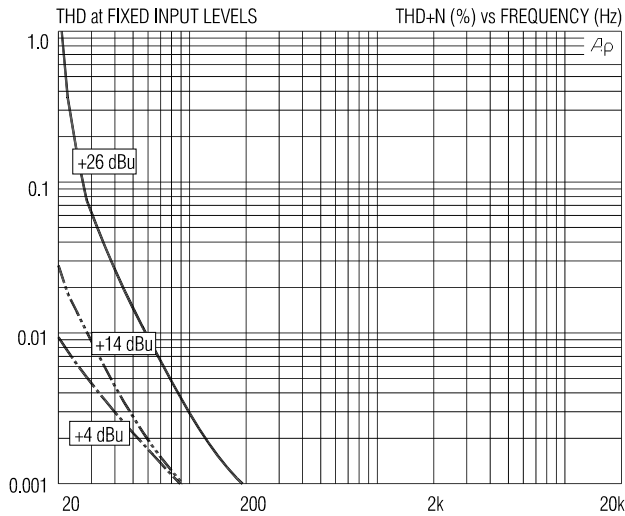
RECOMMENDED MOUNTING IS WITH UR-3 CLAMP (SUPPLIED WITH TRANSFORMER)



LOW NOISE UNITY GAIN INPUT STAGE

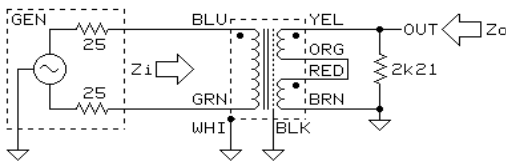
TYPICAL APPLICATION



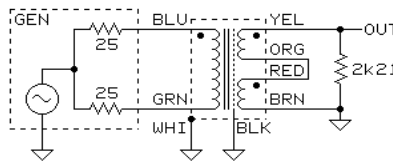


JT-6110K-B SPECIFICATIONS (4:1 series secondaries configuration, all levels are input unless noted)

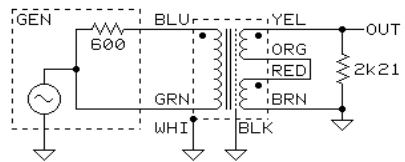
PARAMETER	CONDITIONS	MINIMUM	TYPICAL	MAXIMUM
Input impedance, Zi	1 kHz, +4 dBu, test circuit 1	36 kΩ	37.5 kΩ	39 kΩ
Voltage gain	1 kHz, +4 dBu, test circuit 1	-12.7 dB	-12.5 dB	-12.3 dB
Magnitude response, ref 1 kHz	20 Hz, +4 dBu, test circuit 1	-0.15 dB	-0.06 dB	±0.0 dB
	20 kHz, +4 dBu, test circuit 1	-0.15 dB	-0.08 dB	±0.0 dB
Deviation from linear phase (DLP)	20 Hz to 20 kHz, +4 dBu, test circuit 1		+0.25/-0°	±2.0°
Distortion (THD)	1 kHz, +4 dBu, test circuit 1		<0.001%	
	20 Hz, +4 dBu, test circuit 1		0.009%	0.03%
Maximum 20 Hz input level	1% THD, test circuit 1	+24 dBu	+26 dBu	
Common-mode rejection ratio (CMRR) 50 Ω balanced source	60 Hz, test circuit 2		130 dB	
	3 kHz, test circuit 2	80 dB	95 dB	
Common-mode rejection ratio (CMRR) 600 Ω unbalanced source	60 Hz, test circuit 3		90 dB	
	3 kHz, test circuit 3		58 dB	
Output impedance, Zo	1 kHz, test circuit 1		86.5 Ω	
DC resistances	primary (BLU to GRN)		750 Ω	
	secondary (YEL to BRN)		40 Ω	
Capacitances	1 kHz, primary to shield and case		225 pF	
	1 kHz, secondary to shield and case		250 pF	
Turns ratio		4.070:1	4.073:1	4.080:1
Temperature range	operation or storage	0° C		70° C
Breakdown voltage (see IMPORTANT NOTE below)	primary or secondary to shield and case, 60 Hz, 1 minute test duration	250 V RMS		



TEST CIRCUIT 1



TEST CIRCUIT 2



TEST CIRCUIT 3

All minimum and maximum specifications are guaranteed. Unless noted otherwise, all specifications apply at 25°C. Specifications subject to change without notice. All information herein is believed to be accurate and reliable, however no responsibility is assumed for its use nor for any infringements of patents which may result from its use. No license is granted by implication or otherwise under any patent or patent rights of Jensen Transformers, Inc.

IMPORTANT NOTE: This device is NOT intended for use in life support systems or any application where its failure could cause injury or death. The breakdown voltage specification is intended to insure integrity of internal insulation systems; continuous operation at these voltages is NOT recommended. Consult our applications engineering department if you have special requirements.

JENSEN TRANSFORMERS, INC., 9304 Deering Avenue, Chatsworth, CA 91311-5857, USA
(818) 374-5857 • FAX (818) 374-5856 • www.jensen-transformers.com